

2017 Studentaffairs.com Case Study

Team Members:

Nicole Nicholson (TL), Michael Bailey, Stephanie Mimbs

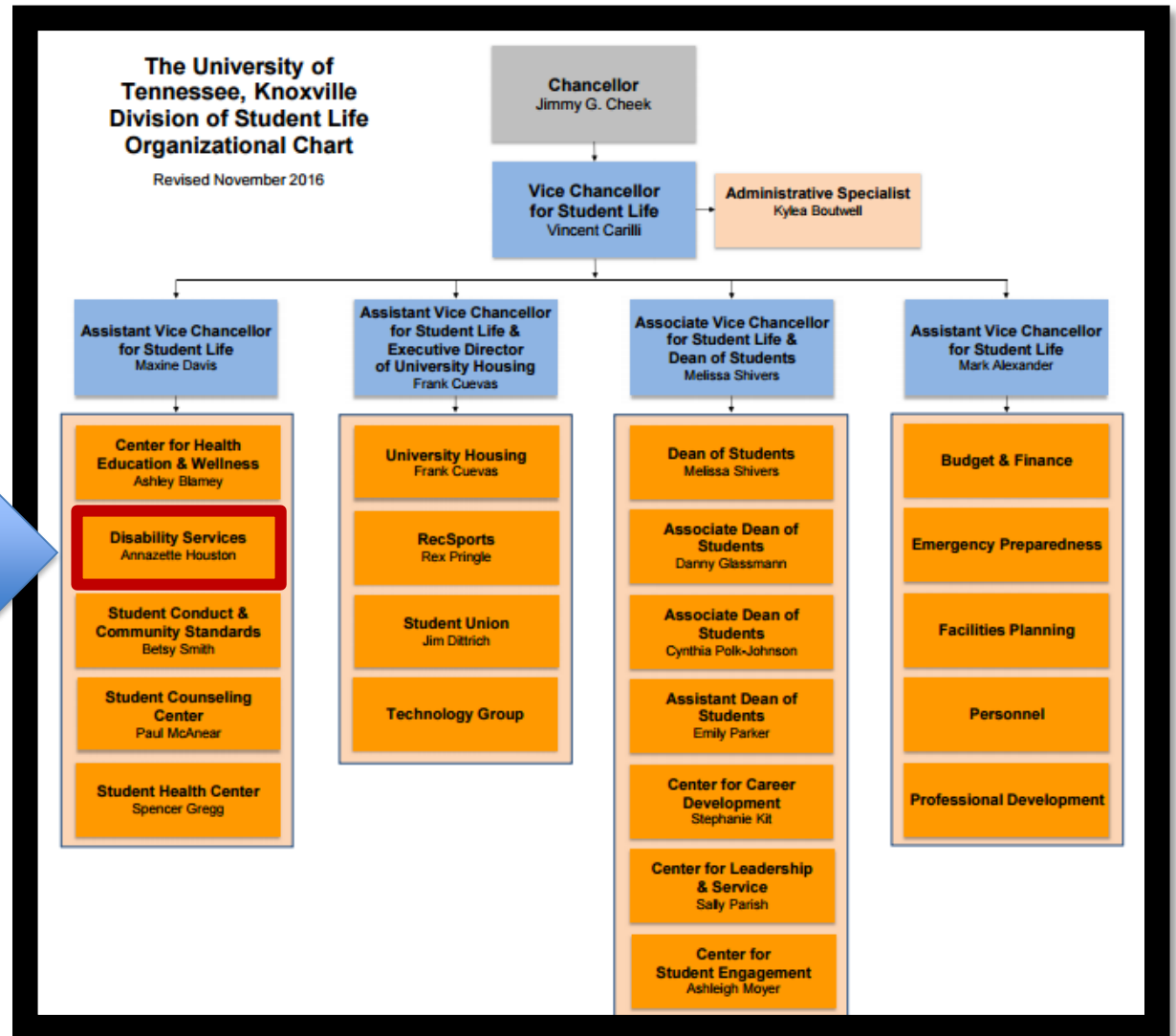


THE UNIVERSITY OF
TENNESSEE
KNOXVILLE

Overview

- **Goal:** To provide assistance & advice in developing the Disability Services Program
- **Proposal Outline:**
 - University Organization Structure
 - Student Development Overview
 - New Student Orientation
 - Guardians and FERPA
 - Academics
 - Faculty Continuing Education Programs
 - Life on Campus
 - Residence Life and Housing
 - Student Activities
 - Budget

University Organizational Structure



Student Development Overview

- Autism Spectrum Disorder (ASD)
 - Students with ASD need support services to further develop skills such as executive functioning, academic skills, self-care, social competence, self-advocacy, and career preparation
 - Strengths: High motivation to learn, Diverse perspective, detail-oriented
- Disability Identity
 - Product of social injustice
 - Caused by social factors and environment (Griffin, Peters, & Smith, 2007)
 - Minority identity

Student Development Overview

- Challenge and Support
 - People can handle challenges with adequate support (Sandford, 1967)
- Challenges:
 - Independent Living
 - Academic Rigor
 - Confidentiality
 - Community Building
- Support:
 - Residence Life through living-learning communities and intentionality of programming
 - Academic Support through faculty, tutoring, and study halls

Note: Challenge and support is just as much for the Parents and guardians as it is for the students

Before College Begins

New Student Orientation

- Presentations
- Student Groups
 - Partnering with Student Activities
 - Delta Alpha Pi
 - National Honor Society for undergraduate and graduate students with disabilities
- Be Aware of ASD Symptoms

Guardians and FERPA

- Federal Education Rights and Privacy Act (FERPA)
 - a federal law that affords parents the right to have access to their children's education records, the right to seek to have the records amended, and the right to have some control over the disclosure of personally identifiable information from the education records. When a student turns 18 years old, or enters a postsecondary institution at any age, the rights under FERPA transfer from the parents to the student ("eligible student").
- Challenge and Support

Life on Campus

Academics

- Transitioning to College Courses Early
 - Take 1-2 courses
 - Take courses that are interesting
- Smaller Classes
- Finding a Niche

Faculty Continuing Education Programs

- Campus-wide training opportunities for faculty, teaching assistants, etc.
 - Online and in-person training options
 - Resource Guides
 - i.e. *A Guide for Higher Education Professionals*
- Training should include:
 - Pedagogical methodology
 - List of the support services offered on campus
 - Tips on ways to create an inclusive classroom environment
 - Target instruction techniques
 - i.e. tutoring and small group work

Residence Life and Housing

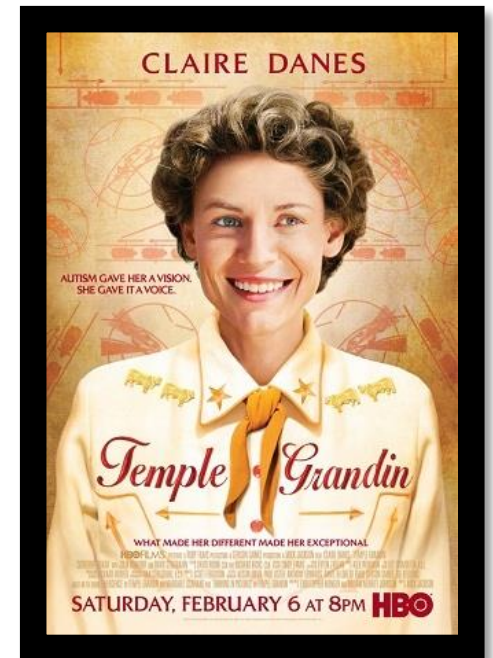
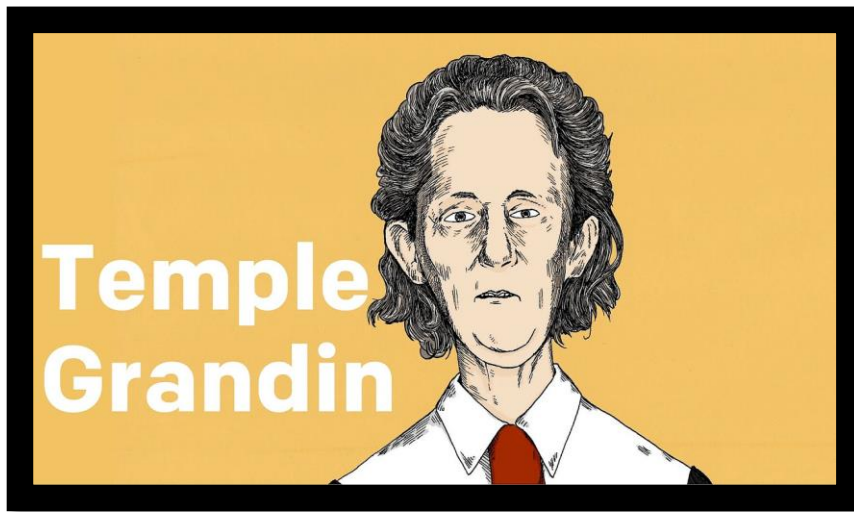
- Residence Life training for staff should include:
 - Inclusive programming techniques
 - How to assist students on the Autism Spectrum
 - Crisis management
 - Roommate conflicts
- Room accommodations for students
 - Single rooms or buy-out options help with sensory overloads
- Living-learning Communities

Student Activities

- Know Your Campus?
 - Building accessibility
 - Elevators, ramps, lights, and sound
- Special Accommodations Requests
 - Can be filtered through this office and sent the Office of Student Engagement/Student Activities to be utilized for all programming
 - An example of a statement can be found below
 - “For more information or to arrange disability services or special accommodations, please contact the Office of Disability Services at (XXX-XXX-XXXX)
- ADA Compatibility

Student Activities

- Programming directly related to these individuals
 - Education
 - Speakers, artists, comedians
 - Temple Grandin – American Program Bureau
 - May be good for Representation



Budget

Mission: The mission of the Office of Disability Services (ODS) is to partner with the campus community in creating equitable access to eligible students while promoting disability-inclusive diversity.

Office of Disability Services				
Expenses	Y1	Y2	Y3	
Salaries				
Director	\$59,000	\$60,770	\$62,593	
Assistant Director (2)	\$104,000	\$107,120	\$110,334	
Coordinator (5)	\$195,000	\$200,850	\$206,876	
Administrative Staff (5)	\$117,500	\$121,025	\$124,656	
Interpreters/Transcribers (7)	\$108,500	\$111,755	\$115,108	
Student Staff (9 @ 10 hrs x \$7.25)	\$15,660	\$16,130	\$16,614	
<i>Salaries Total</i>	<i>\$436,660</i>	<i>\$449,760</i>	<i>\$463,253</i>	
Supplies				
Printing	\$2,700	\$2,781	\$2,864	
Office Supplies	\$14,750	\$15,193	\$15,648	
<i>Supplies Total</i>	<i>\$17,450</i>	<i>\$17,974</i>	<i>\$18,513</i>	
Marketing/Advertising				
Brochures/Pamphlets	\$4,200	\$4,326	\$4,456	
Sinage	\$2,500	\$2,575	\$2,652	
Promotional Items	\$1,750	\$1,803	\$1,000	
<i>Marketing/Advertising Totals</i>	<i>\$8,450</i>	<i>\$8,704</i>	<i>\$8,108</i>	
Programming				
Speakers/Guests (4)	\$25,000	\$25,000	\$25,000	
Delta Alpha Pi	\$3,675	\$3,675	\$3,675	
Scholarships (5)	\$5,000	\$5,000	\$5,000	
Faculty Training	\$2,500	\$3,000	\$3,500	
<i>Programming Total</i>	<i>\$36,175</i>	<i>\$36,675</i>	<i>\$37,175</i>	
Contingency	\$20,000	\$20,000	\$20,000	
Expenses Total	\$518,735	\$533,112	\$547,048	
Revenue	Y1	Y2	Y3	
Student Affairs and Enrollment Management	\$500,000	\$515,000	\$530,450	
Gifts and Donations	\$15,000	\$15,500	\$16,000	
Health Fee (\$1.25 x 22,000 students)	\$27,500	\$28,325	\$29,175	
<i>Revenue Total</i>	<i>\$542,500</i>	<i>\$558,825</i>	<i>\$575,625</i>	
(Defecit)/Surplus	\$23,765	\$25,713	\$28,576	

References

- Ackles, L., Boman, M., Thierfeld Brown, J., Cornman, D., Lubbers, P., McGarry, & Rigler, M. (2014). *Emerging practices for supporting student on the Autism Spectrum in higher education: A guide for Higher Education professionals*. New York: Rochester.
- American Association on Health and Disability <http://www.aahd.us> Organization for Autism Research <http://www.researchautism.org>
- Griffin, P., Peters, M. L., Smith, R. M. (2007) Ableism curricular design. In M. Adams, L. A. Bell, & P. Griffin (Eds), *Teaching for diversity and social justice* (2nd ed., pp. 335-358). New York: Routledge.
- Sandford, N. (1967). *Where colleges fail: The study of the student as a person*. San Francisco: Jossey-Bass.
- Schwallie Family Scholarship Program <http://www.researchautism.org/news/otherevents/scholarship.asp>
- Students with Asperger Syndrome: A Guide for College Personnel Lorraine Wolf, Jane Thierfeld Brown & Ruth Bork (Autism Asperger Publishing Company, 2009)
- University of Alabama. (2017). *UA-ACTs Services*. Retrieved from <https://autism-clinic.ua.edu/uaacts/services.html>
- University of Alabama. (February, 2017). *Faculty education programs*. Retrieved from <https://autism-clinic.ua.edu/uaacts/UAACTSBrochure.pdf>
- University of Alabama. (February, 2017). *Housing*. Retrieved from <https://autism-clinic.ua.edu/uaacts/housing.html>
- VanBergeijk, E., Klin, A. & Volkmar, F. J *Autism Dev Disord* (2008) 38: 1359. doi:10.1007/s10803-007-0524-8
- <https://www.autismspeaks.org/family-services/tool-kits/iep-guide>
- <http://familypolicy.ed.gov/faq-page/12#t52n50>
- <http://researchautism.org/resources/understanding-asperger-syndrome-a-professors-guide/>
- <https://www.rit.edu/~w-ssp/documents/ASDinHigherEdGuide.pdf>