

# UNIVERSITY OF GEORGIA

TEAM LEADER:

ARIANA MOLLERS

TEAM MEMBERS:

LIZ BALDWIN

ALLYSA CLAGETT

ILYSSA PADRID





**SASS**

supporting autism  
spectrum students

YOUR HOME AWAY FROM HOME

# MEET THE STAFF!



**LIZ BALDWIN**  
**DIRECTOR**

B.A. Psychology &  
French, *Bucknell*  
*University '16*



**ARIANA MOLLERS**  
**ASSISTANT**  
**DIRECTOR**

B.A. Public  
Relations,  
*Virginia Tech '16*



**ILYSSA PADRID**  
**SENIOR**  
**COORDINATOR**

B.A. Public Health  
Policy, *UC*  
*Irvine '14*



**ALLYSA CLAGETT**  
**GRADUATE**  
**ASSISTANT**

B.A. Psychology, *NC*  
*State '16*

WHAT IS THE

# AUTISM SPECTRUM?

Persistent deficits in social communication and social interaction across multiple contexts, as manifested by the following, currently or by history

**Autism Spectrum Disorder (ASD) can be reliably diagnosed as early as age two**

While some individuals are thriving, many, many others need personalized support and services to reach their full individual potential for the rest of their lives



1 in 49

male-identified are diagnosed with autism spectrum disorder



1 in 189

female-identified are diagnosed with autism spectrum disorder

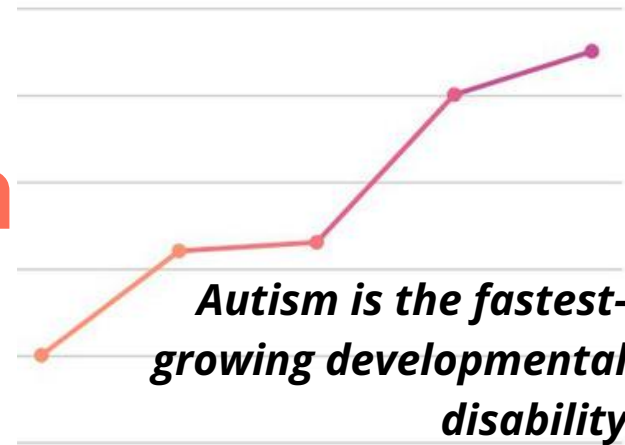
More than **3.5 million**

Americans live with an autism spectrum disorder



the average cost of educating an ASD student is about:

**\$12k**

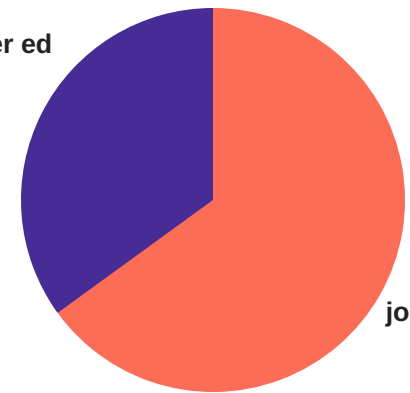


It costs more than

**\$8,600**

extra per year to educate a student with autism

no job/higher ed  
35%



job/higher ed  
65%

ASD young adults (age 19-23) after leaving high school

# SUPPORTING AUTISM SPECTRUM STUDENTS (SASS)



ORIENTATION



FACULTY



ACCOMMODATIONS



SERVICES



STUDENT ORGS



WORKSHOP

ORIENTATION

FACULTY

ACCOMMODATIONS

SERVICES

STUDENT ORGS

WORKSHOP

# ORIENTATION PROGRAM



- **Personalized** presentations
- **Small group** activities
- **Opportunity** to self-identify & register needs with resource center
- **Build community** with one another
- **Create** relationships with peer mentors
- **Academic** advising



- **Opportunity** to connect with pharmacy about student medication
- **Legal** representatives available for consultation
- **Garner** support from other support systems
- **Financial** aid consultation

ORIENTATION

FACULTY

ACCOMMODATIONS

SERVICES

STUDENT ORGS

WORKSHOPS



# FACULTY

Implement a required onboarding webinar for faculty and staff training

Must be re-taken every 2 years





# ACCOMMODATIONS



## technology

- **Audiobook** Library
- **Subtitle** services
- **Notetaking** services
- **Speech to text** services
- **Alphasmart** word processing tool availability
- **Tape/Video** recording services

## classroom

- **Advocate** for mixed media classrooms with easily moved furniture
- **Encourage students** to advocate for their right to:
  - Take breaks
  - Use fidget tools
- **Encourage faculty** to outline and make available the plan for each class session

## testing

- **Testing and computer lab space** for those who need to type responses or need extra time
- **Train staff** to be proctors for modified oral examinations
- **Educate faculty** on accommodation
- **Individualized Educational Plan (IEP) Testing**



# SERVICES

- **Establish relationship** with local law office for pro-bono legal work
- IEP testing for **right to accommodations**
- **Funding** allocations

- **Establish relationship** with local pharmacy
- Manage **automatic renewals**
  - student calls to opt-out of a renewal
- **Provide services** for medication storage and administration if needed



**LEGAL COUNSEL**



**PHARMACY**

---

# SENSORY OVERLOAD

---

experience what  
sensory overload &  
sensitivity feels like

can you make it  
through the next 68  
seconds?

PLEASE CLICK ON THE  
PLAY BUTTON FOR  
VIDEO EXPERIENCE



# SENSORY SERVICES

ROOMS DESIGNATED TO SENSORY SERVICES  
AROUND CAMPUS WILL PROMOTE:



**WELLNESS**



**COMFORT**



**COMMUNITY**

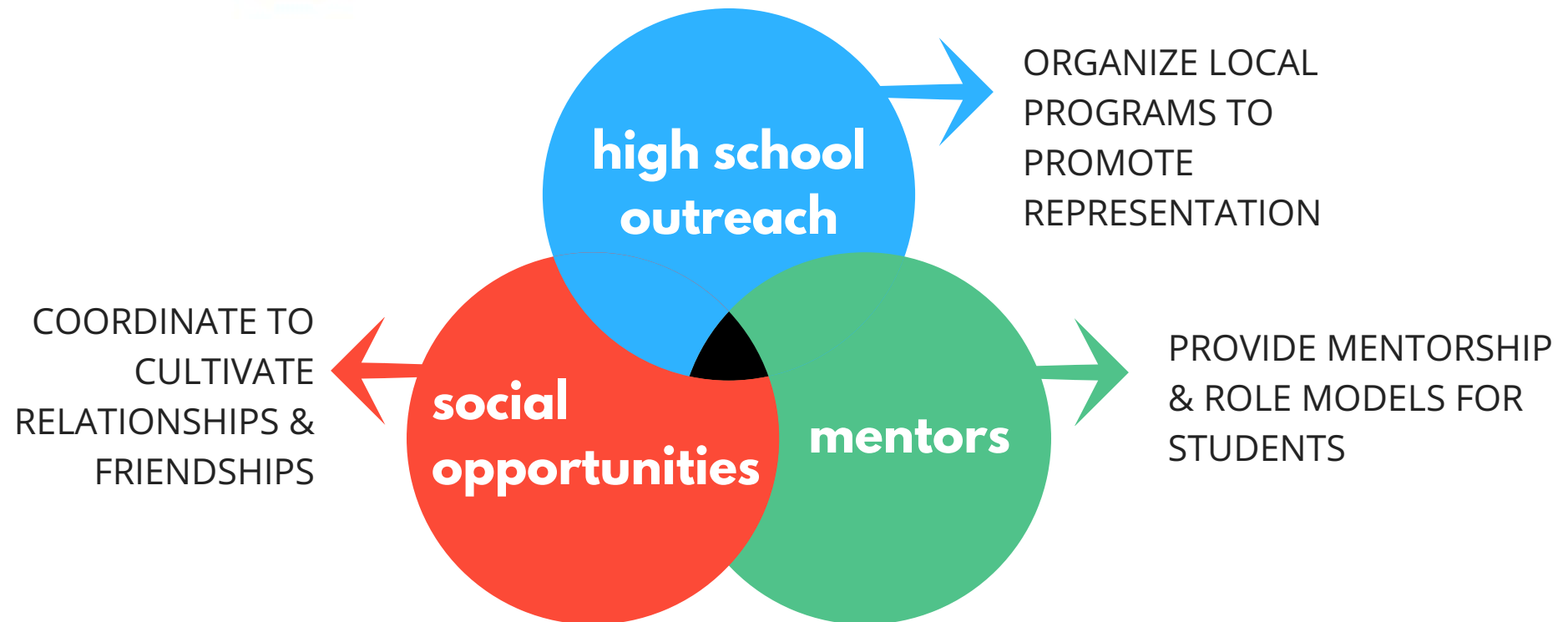
## MATERIALS PROVIDED

- **Weighted Blankets**
- **White Noise**
- **Headphones**
- **Pillows**
- **Relaxing activities**

# STUDENT ORGANIZATION



**A STUDENT ORGANIZATION FOR INDIVIDUALS ON THE SPECTRUM FOR THE PURPOSE OF SOCIAL SUPPORT, COMMUNITY OUTREACH, AND SERVICE**



# STAGE MODELS OF DISABILITY IDENTITY FOR ACT ORGANIZATION

## STAGE 1: ACCEPTANCE PHASE

*PERSON ACCEPTS OWN IDENTITY*

WHERE MOST STUDENTS ENTER THE INSTITUTION BEFORE THEY JOIN ACT

## STAGE 2: RELATIONSHIP PHASE

*PERSON MEETS OTHERS LIKE THEM & ENGAGES IN CONVERSATION. LEARNS ABOUT WAYS OF GROUP*

## STAGE 3: ADOPTION PHASE

*ADOPTS THE VALUES OF THE GROUP: INDEPENDENCE, SOCIAL JUSTICE, EQUITY*

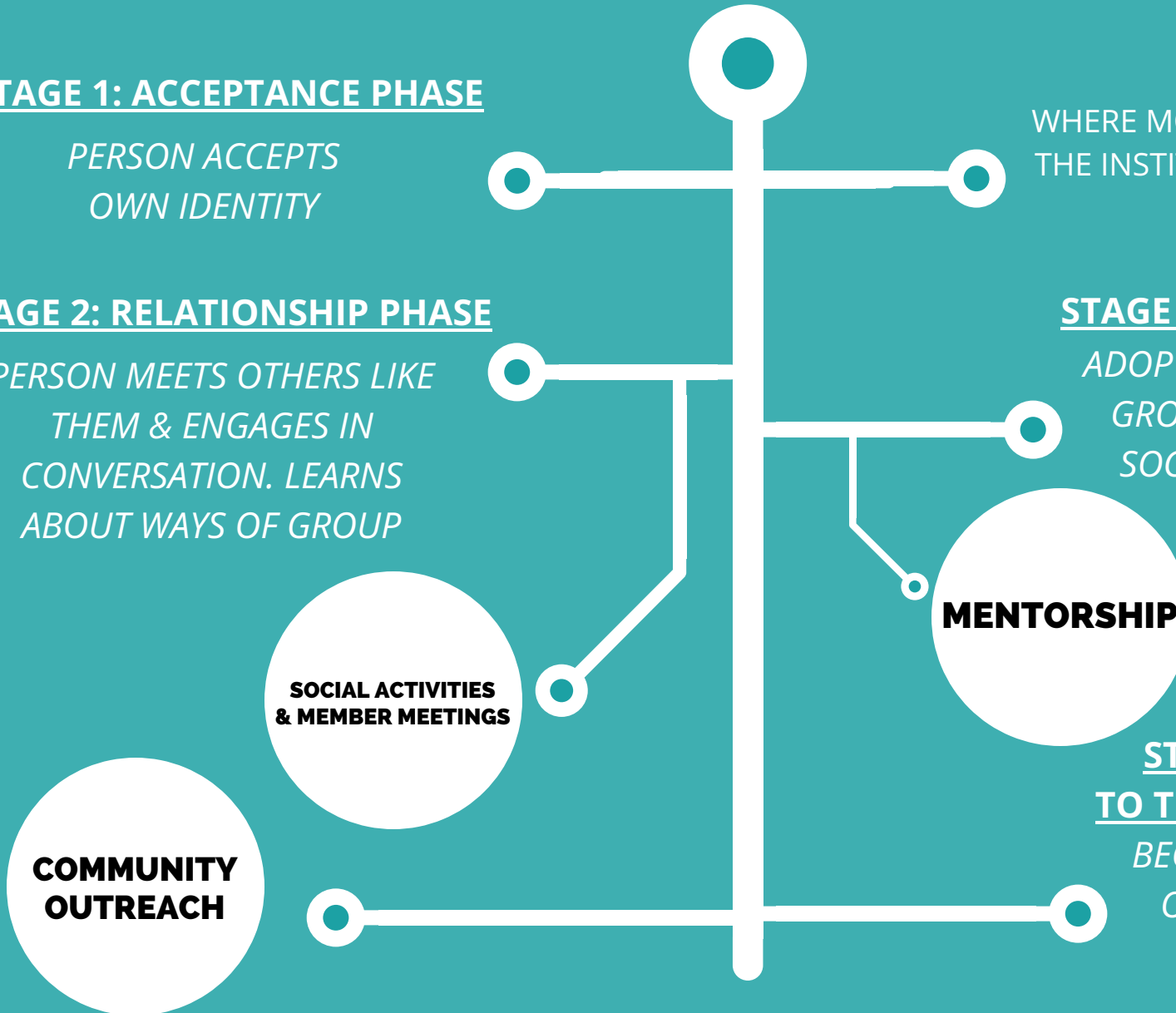
**MENTORSHIP**

**SOCIAL ACTIVITIES & MEMBER MEETINGS**

**COMMUNITY OUTREACH**

## STAGE 4: GIVING BACK TO THE COMMUNITY PHASE

*BECOMES ROLE MODEL FOR OTHERS, HELPS OTHERS, GIVES BACK TO THE COMMUNITY*



# STUDENT ORGANIZATION: ACT

## SOCIAL ACTIVITIES & MEMBER MEETINGS

- Variety of activities, such as bowling, crafting, food, movies, and sports to appeal to all members
- Presentations on social skills to help wide range of spectrum
- End of year banquet to invite community for club recognition

## COMMUNITY OUTREACH

- Student-led presentations and dialogues for students with disability to talk about college access and experiences
- Opportunities for ACT members to mentor high school students
- Complete service projects with local high schools



## MENTORSHIP

- Opportunity for older members to role model and mentor younger members of organization
- Leadership positions



# WORKSHOPS



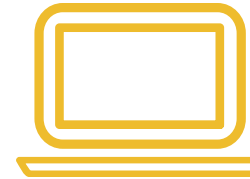
**NAVIGATING ROMANTIC  
RELATIONSHIPS**



**STUDY SKILLS 101**



**ALCOHOL AND DRUGS**



**HOW TO USE  
TECHNOLOGY**



**SOCIAL SKILLS:  
FIRST-YEAR  
HALL DYNAMICS**



**RELATIONSHIPS  
OVER BREAK**



**FIRST TIME AWAY  
FROM HOME TRANSITION**



**SAFE SEX**



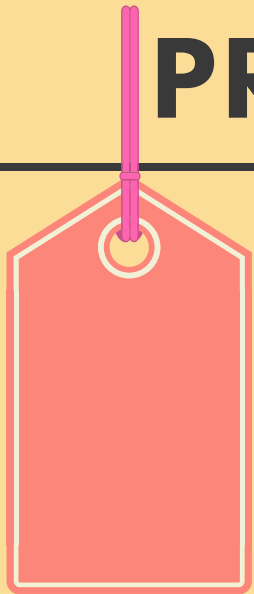
**COMMUNICATING WITH  
PROFESSORS**



**MAINTAINING  
FRIENDSHIPS  
OVER BREAK**



# PROPOSED BUDGET



**ACT Fund**

1%

**Programming Fund**

22%

**Director**

28%

**Grad Assistant**

6%

**Computer Lab**

13%

**Sensory Room**

13%

**Workshops**

5%

**Software**

20%

**Senior Coord.**

19%

**Assist. Director**

25%

**Audio Books**

5%

**Marketing**

1%

**Text to Speech**

5%

**Technology**

38%

**TOTAL: \$183,200**

“

**AND THEN I WILL GET A FIRST  
CLASS HONOURS DEGREE AND I  
WILL BECOME A SCIENTIST.**

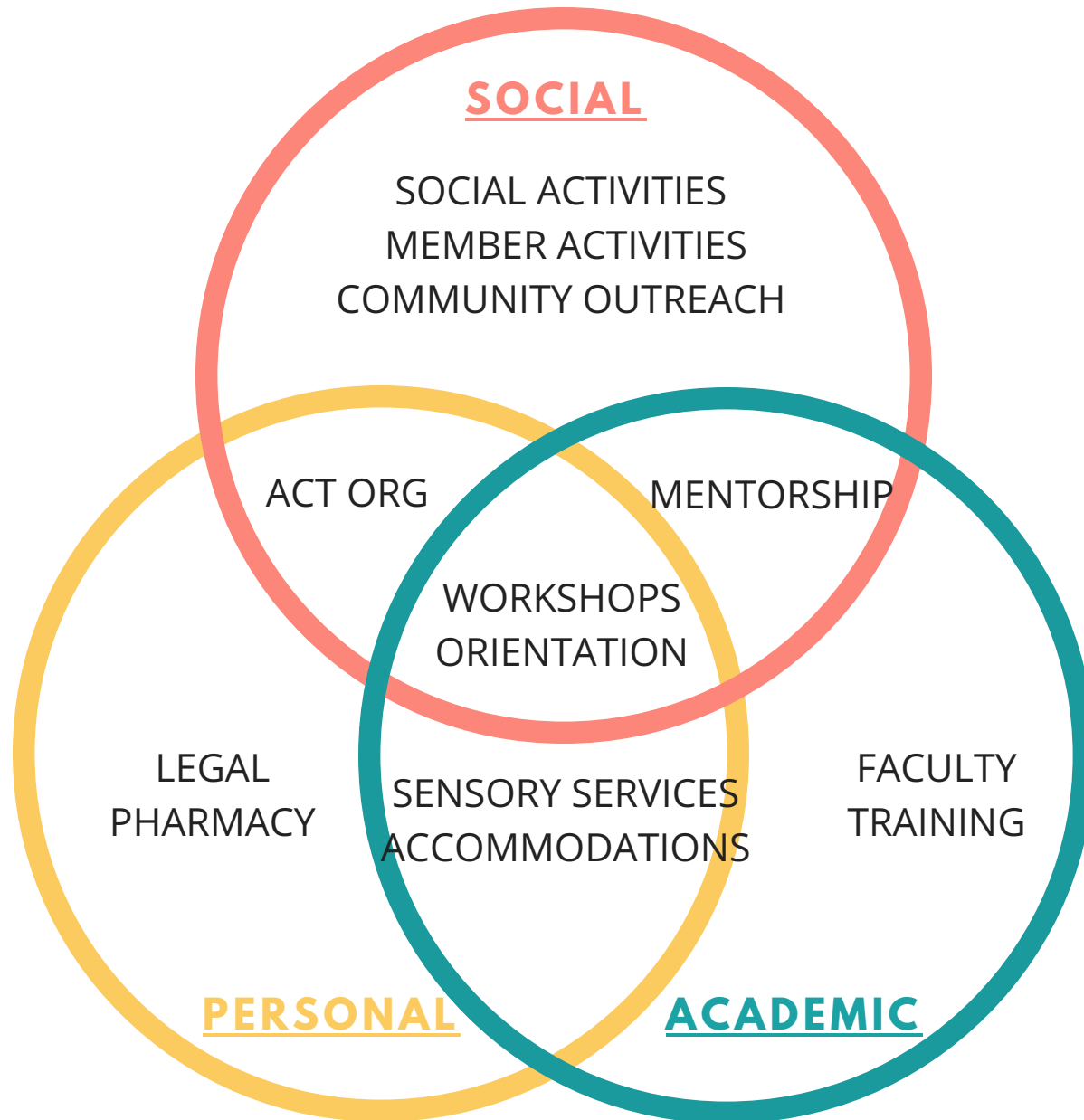
**AND I KNOW I CAN DO THIS BECAUSE I WENT TO  
LONDON ON MY OWN, AND BECAUSE I SOLVED THE  
MYSTERY OF WHO KILLED WELLINGTON? AND I FOUND  
MY MOTHER AND I WAS BRAVE AND I WROTE A BOOK  
AND THAT MEANS I CAN DO ANYTHING.**

”

*-The Curious Incident of the Dog in the Night-Time*  
Mark Haddon

# THE SASS MODEL

---



# REFERENCES

---

Forber-Pratt, A.J., & Aragon, S.R. (2013). *A model of social and psychosocial identity development for postsecondary students with physical disabilities*. In M. Wappett & K. Arndt (Eds.), *Emerging perspectives on disability studies* (pp. 1-22). New York: Polgrave-MacMillian.

Murray, C., Flannery, B. K., & Wren, C. (2008). *University staff members' attitudes and knowledge about learning disabilities and disability support services*. *Journal of Postsecondary Education and Disability*, 21(2), 73-90.

Patton, L. D., Renn, K. A., Guido, F. M., & Quaye, S. J. (2016). *Student Development in College: Theory, Research, & Practice*. San Francisco, CA: Jossey Bass.

Society, A. (2017, February 14). Home. Retrieved February 22, 2017, from <http://www.autism-society.org/>

Strange, C. C., Banning, J. H. (2015). *Designing for learning: Creating campus learning environments for student success*. San Francisco, CA: Jossey Bass.

The Center for Disease Control (2017, February 21). Retrieved February 22, 2017, from <https://www.cdc.gov>